

Meet the Designers



Koncept was born in 2002 when industrial designer Peter Ng and his two sons, Kenneth Ng and Edmund Ng, joined forces in order to harness years of manufacturing and industrial design experience.

The Koncept team has since designed a range of products that have significantly influenced the LED task lighting industry. Their works have been featured in major press such as TIME Magazine, Oprah Magazine and Interior Design Magazine. Koncept has earned over 50 international design awards to date, including the Red Dot Design Award, iF Design Award, and the Good Design Award.

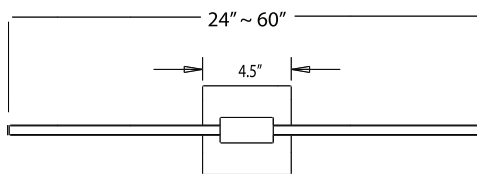
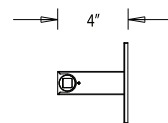
Embracing modern, minimalist lines while maintaining rich functionalities, Koncept's designs strike the perfect balance between form and function.

Environmental Considerations

- Water-based paint
- LEDs do not contain mercury
- Low power consumption
- LEED credit eligibility

Details

- 24": 1000 lumens; 16 W
- 36": 1600 lumens; 24 W
- 60": 2000 lumens; 30 W
- 50,000 hours lifespan
- 3,000 K light color
- Compatible with any ELV wall dimmer
- Continuous dimming
- Brushed Nickel, Matte Black, Matte White



KONCEPT

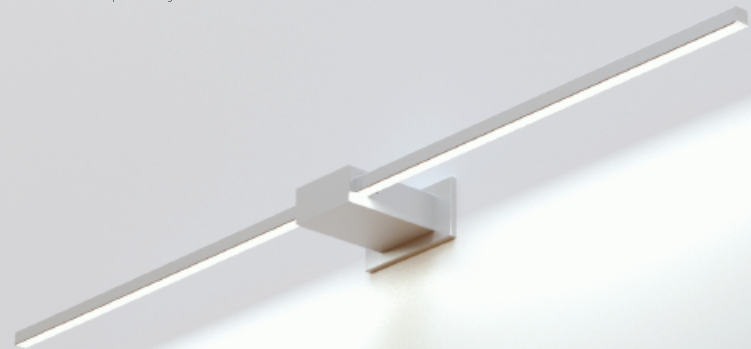
Koncept
429 E. Huntington Drive, Monrovia, CA 91016
T 323.261.8999
F 323.261.8998
sales@koncept.com

koncept.com/ZBarWallSconce



One Sconce For All

The Z-Bar Wall Sconce can be used to highlight artwork or a mirror, or as its own contemporary work of art.



Simplicity with Variety

The sconce comes in three sizes, the smallest of which can be mounted at the end of the light bar as well as from the middle.

Light Where You Need it

This wall sconce can be hung horizontally, vertically, even diagonally on a wall or ceiling.



Freedom in Direction

The slim LED bar is rotatable, allowing for freedom to direct the diffused light.

