

Product: Sobre

Location: City of Woodbury, Minnesota. Central Park

Designer/Specifier: Alternative Business Furniture Laurie Leonard, Project Designer
<https://koncept.com/Sobre>



Creating successful public spaces requires more than selecting furniture and finishes. It requires understanding how people interact with their environment and designing spaces that continue to serve a community long after construction is complete.

As a Project Designer with Alternative Business Furniture (ABF), Laurie Leonard collaborates with clients, architects, and project teams to create functional, thoughtfully designed environments that enhance the user experience.

That approach was central to the renovation and expansion of Central Park in Woodbury, Minnesota, a community hub anchored by its expansive climate-controlled indoor atrium, a year-round gathering space where people of all generations can work, read, socialize, and connect. Designing for this signature space required balancing aesthetics with usability.

Working alongside HGA and the City of Woodbury, Laurie helped create functional, welcoming spaces through carefully considered furniture, finish, and lighting selections.

Reflecting on the process, Laurie recalls the collaborative nature of the project.

"The selection meetings were with myself and the end user. They did an awesome job. It was a lot to select, a lot to think about."



According to project team feedback provided during the feature development process, Minnesota's seasonal daylight conditions played an important role in the lighting strategy for the atrium. While the space benefits from significant natural light throughout much of the year, shorter winter days and extended periods of overcast weather create changing lighting conditions that influence how visitors experience the environment.

As part of the overall design solution, ten 46-inch Koncept Sobre Co-Working Lights were specified for the communal worktables located throughout the atrium.

The Sobre was selected for its slim profile, durability, and ability to support a shared public environment. Rather than placing a traditional table lamp on a busy communal table, the Sobre is permanently mounted through the tabletop, keeping the work surface clear while maintaining the clean, open feel of the atrium.

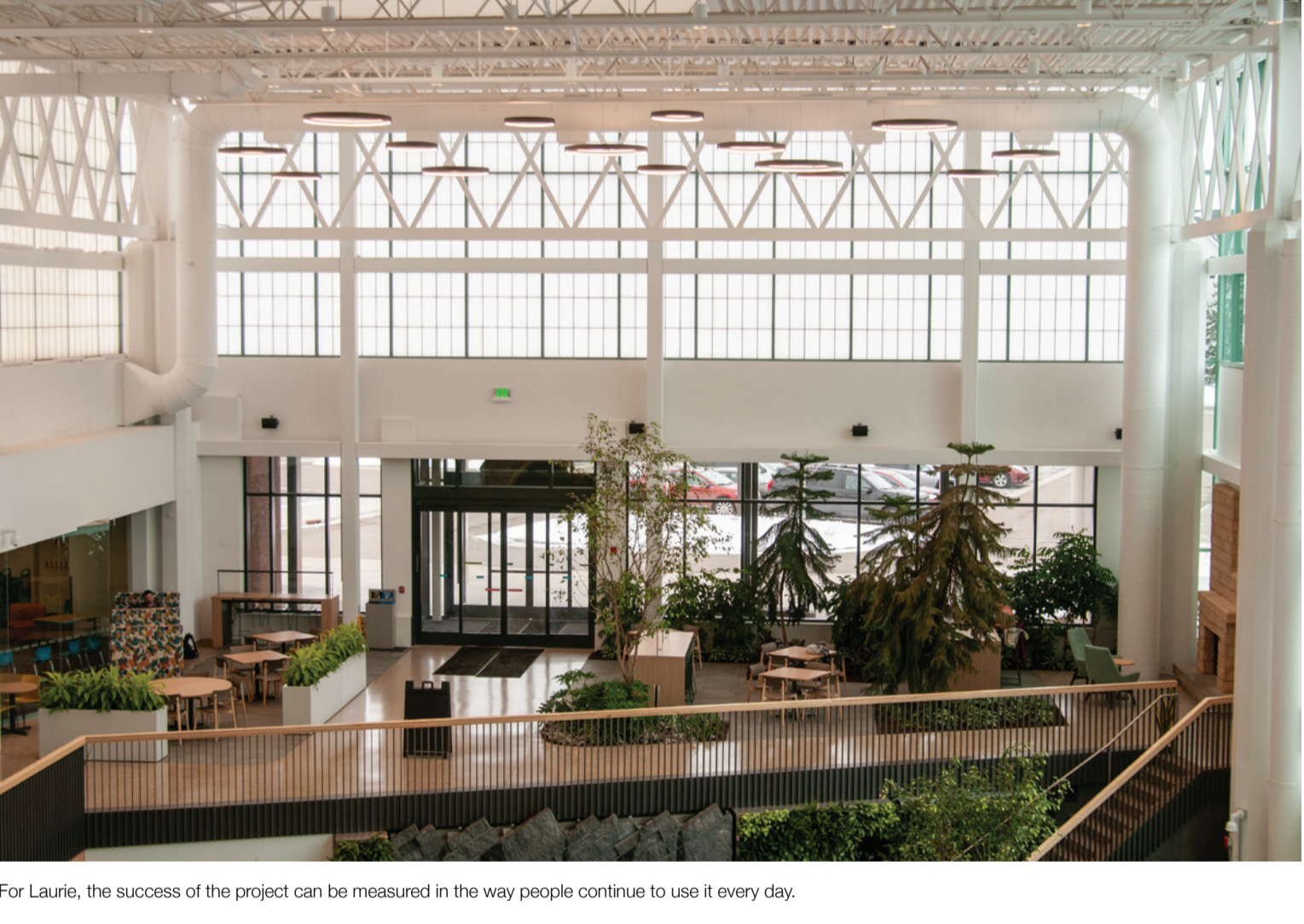
For this project, two connected 46-inch Sobre light bars were specified to provide continuous illumination across the large communal table, giving multiple users access to light without taking up valuable workspace.

Designed for commercial environments, the Sobre is built with durability in mind, making it ideal for public spaces where fixtures experience constant daily use and interaction. One feature that stood out was its integrated occupancy sensor, which automatically turns the light on when someone approaches the table. In a shared workspace, this means users don't have to reach into someone else's personal space just to turn on the light. As daylight changes throughout the day, the concealed touchstrip dimmer, seamlessly integrated into the slim support stem, allows each user to easily adjust the light level for reading, working, or simply creating a more comfortable environment.

Finished in black the Sobre complements the architecture without becoming the focal point, allowing the space and the people using it to take center stage.



Positioned among mature trees and abundant natural light, the Sobre quietly supports the daily activity taking place around it, allowing the space and its users to remain the focus.



For Laurie, the success of the project can be measured in the way people continue to use it every day.

The completed project shows how thoughtful design, collaboration, and careful product specification can create a community space that welcomes people of all ages and continues to serve them throughout every season.

If you're considering the Sobre for an upcoming project, we'd love to hear from you. Sobre offers both fixed desk clamp and through-table mounting options for permanent or flexible installations. We also welcome customization to meet your project's unique needs, including custom finishes, color temperatures, and body lengths. Reach out to us to learn more about the Sobre Co-Working Light and how it can be tailored to your next project.

Koncept would like to thank Erin Eneboe of e tu Interiors for her assistance in coordinating project information, facilitating conversations with the design team, and providing photography and supporting documentation for this Designer Spotlight.

Project Credits

Client: City of Woodbury

Architecture & Design: HGA

Construction: Kraus-Anderson

Furniture & Interior Solutions: Alternative Business Furniture

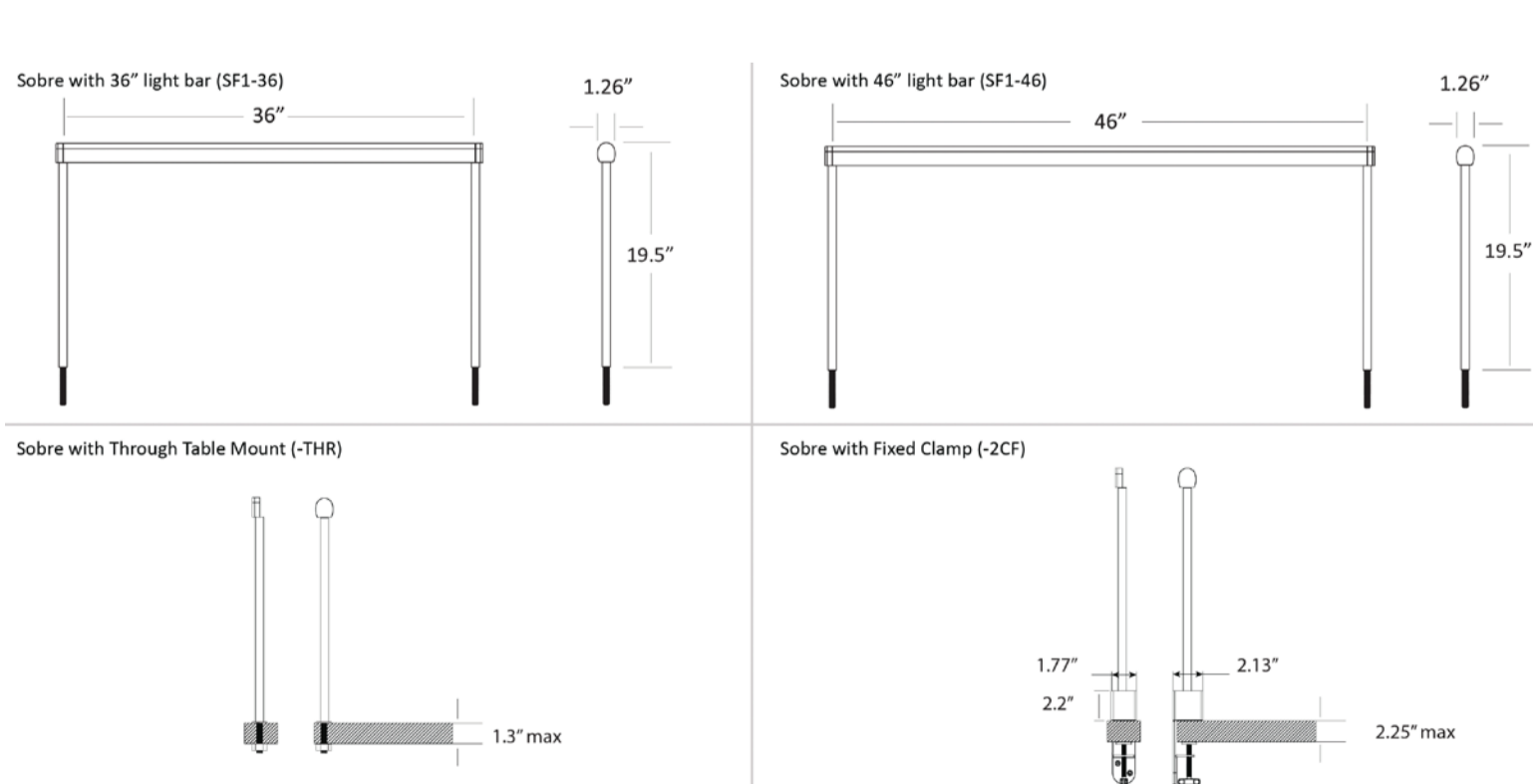
Featured Designer: Laurie Leonard

Koncept Representative: Erin Eneboe, e tu interiors

Lighting: 10 x 46" Koncept Sobre Co-Working Lights

Photography: Courtesy of e tu interiors / Project Team

Sobre Dimensions



Designer Spotlight

Firm and Designer: Eden Prairie, MN | Alternative Business Furniture | Laurie Leonard, Project Designer

Company Background: Founded in 1993, Alternative Business Furniture (ABF) is an independent Minnesota-based workplace interiors and furniture solutions firm. With more than 30 years of experience, ABF collaborates with clients, architects, and design teams to deliver thoughtful, functional environments through furniture planning, project management, installation, and customized workspace solutions.

Quote: "Those finishes meetings were with myself and the end user. They did an awesome job — it was a lot to select, a lot to think about" - Laurie Leonard



ALTERNATIVE BUSINESS FURNITURE

Value...Service...Choice.

koncept