

Product: Z-Bar Pendant Square & Rectangle, Acoustic Panels, Ramen Wall Sconce

Location: Bocado Tapas Bar, 82 Winter Street Worcester, MA 01604

Designer/Specifier: Decorum Lighting and Design in Northborough, MA

<https://koncept.com/Z-Bar-Pendant-Square> | <https://koncept.com/ZBarPendantRectangle> | <https://koncept.com/AcousticPanelsHorizontal> | <https://koncept.com/AcousticPanels> | <https://koncept.com/Ramen>

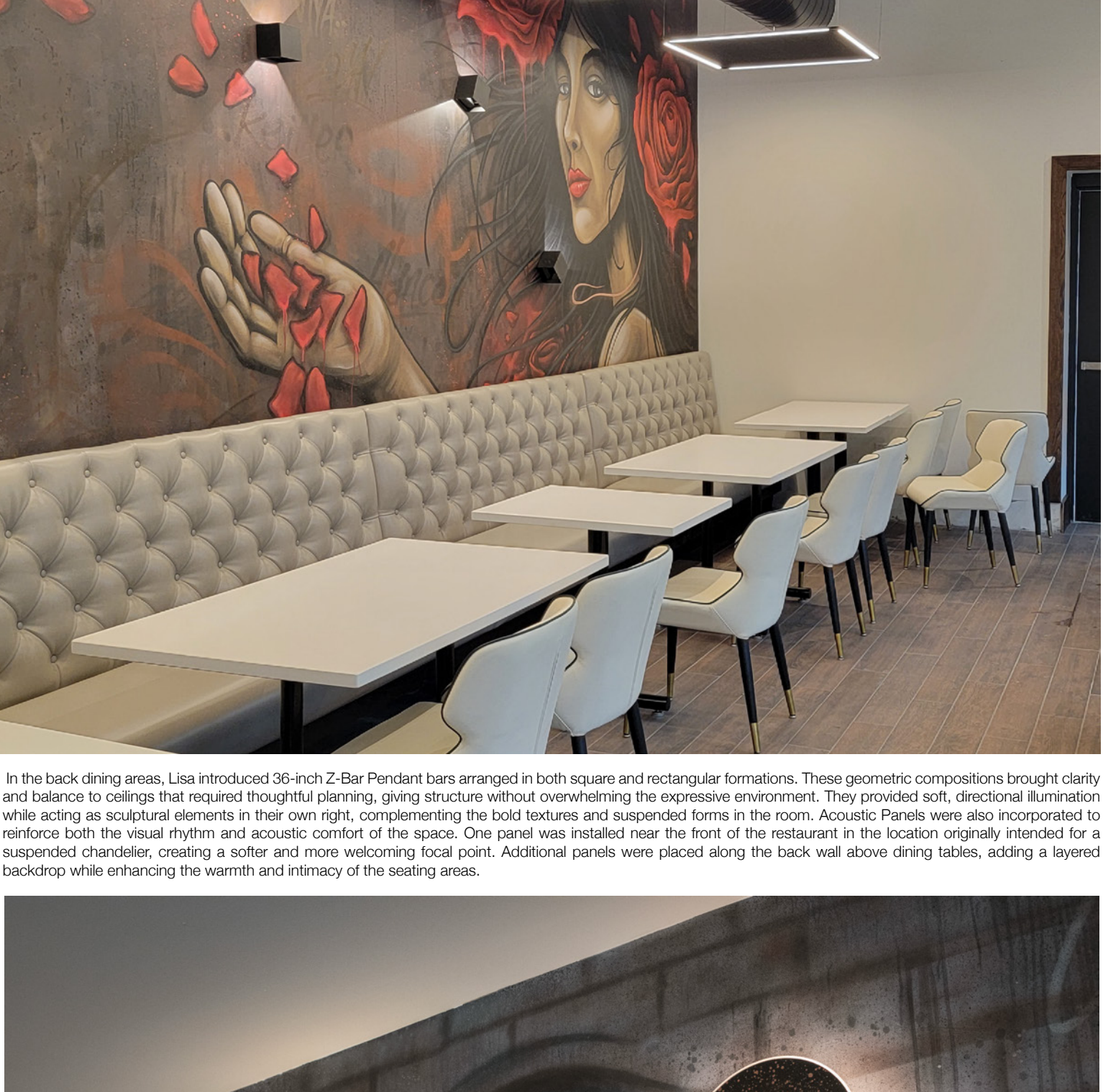


Great design often begins with a conversation — one shaped by trust, shared history, and an instinctive understanding of how a space should feel. For Lisa Albano-Selzo, owner of Decorum Lighting & Design, lighting design is both a craft and a personal dialogue. With more than 30 years of experience guiding clients through selections, concepts, and technical decisions, Lisa approaches every project with her signature blend of clarity, intuition, and artistry.

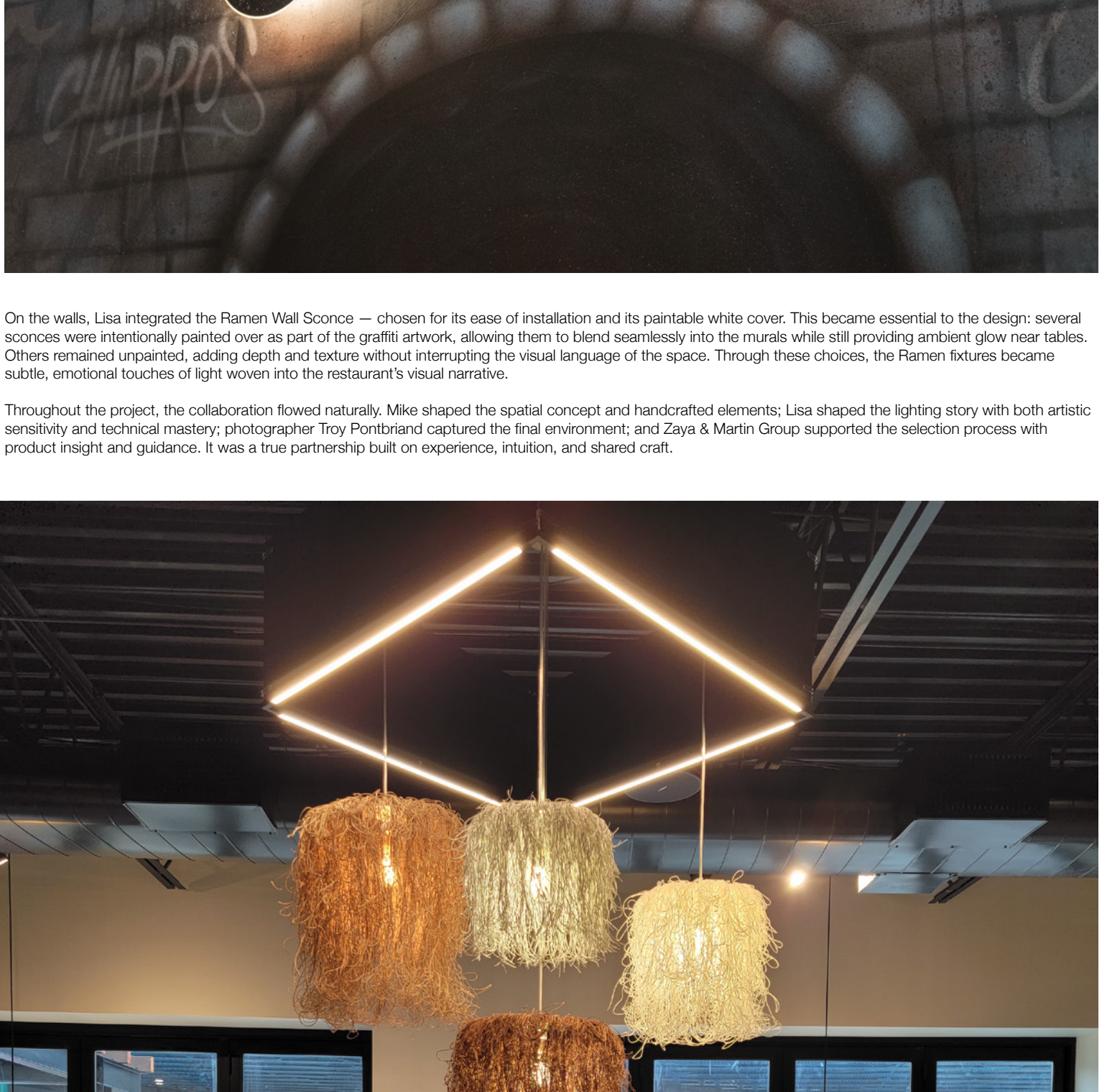
Her long-standing collaboration with Mike Covino, President of Niche Hospitality, has produced multiple Bocado spaces over the years. For the latest evolution of Bocado Tapas Wine Bar in Worcester, MA, Mike envisioned the Cochera and Bodega rooms as an expressive, urban reinterpretation of Spanish dining — where bold artistry, handcrafted textures, and warm hospitality work together to create a setting that feels alive. With Mike leading furniture design and fabrication, and photographer Troy Pontbriand documenting the finished project, Lisa stepped in to shape the lighting environment that would complete the experience. Sales representatives Kirk Martin and Chris from Zaya & Martin Group supported the project throughout, helping connect the team with the right Koncept solutions from the very beginning.

Inside the space, graffiti sweeps across the walls like movement. Sculptural forms hang overhead, blending hand-worked materials with modern geometry. The restaurant carries the energy of a contemporary gallery wrapped inside a dining room — vibrant, layered, and unapologetically expressive. In such a visually charged environment, the lighting needed to become part of the composition rather than compete with it. This became the central design challenge: integrating functional lighting into a space where the artwork is the architecture. Every fixture had to support the mood without disrupting the visual stories flowing across the ceilings and walls.

Lisa's expertise made this translation possible. Once Mike explained the creative direction, she mapped the lighting strategy with precision — determining where glow should fall, where fixtures should disappear, and how each element could harmonize with the textures, art, and spatial rhythm.

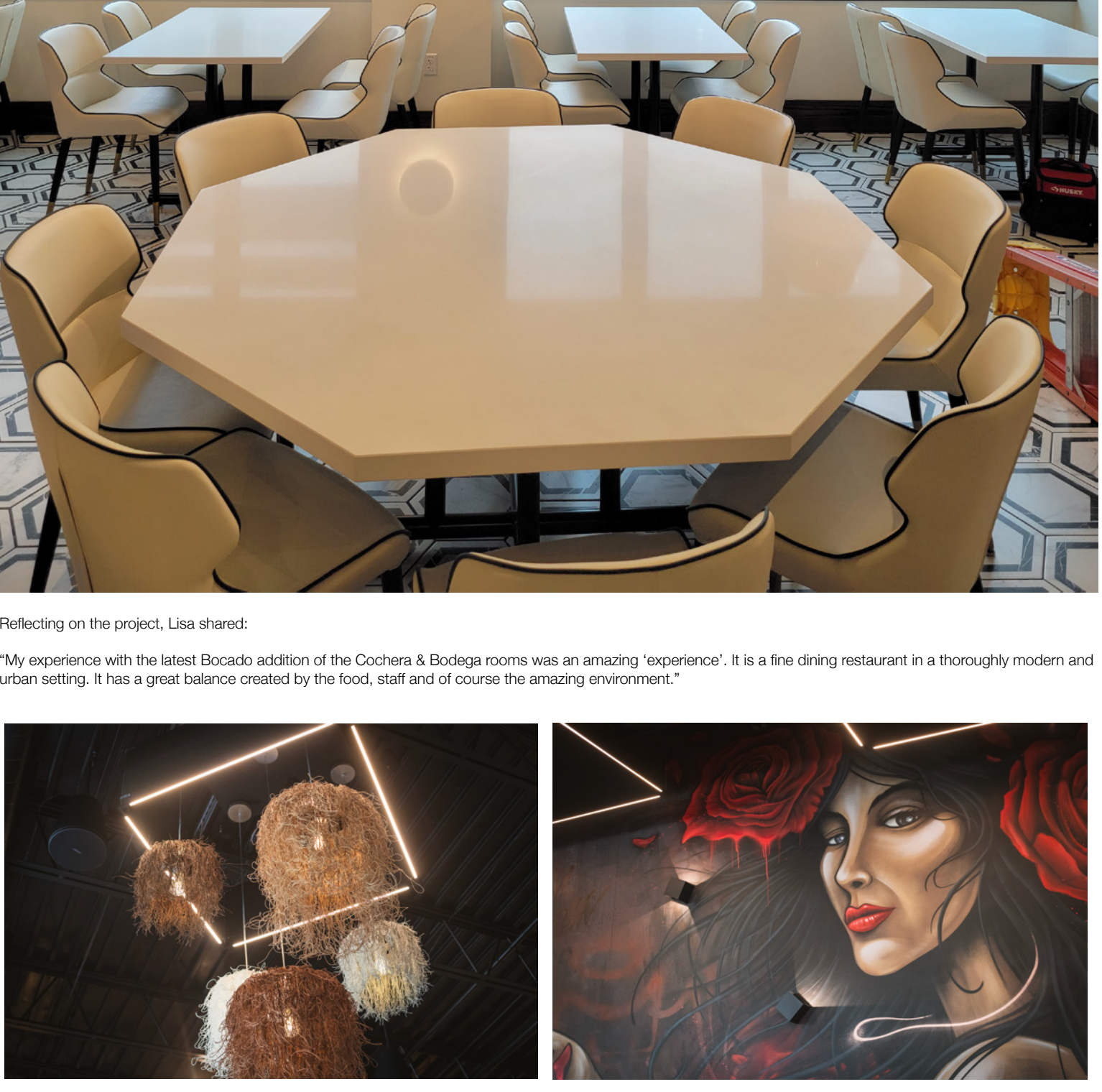


In the back dining areas, Lisa introduced 36-inch Z-Bar Pendant bars arranged in both square and rectangular formations. These geometric compositions brought clarity and balance to ceilings that required thoughtful planning, giving structure without overwhelming the expressive environment. They provided soft, directional illumination while acting as sculptural elements in their own right, complementing the bold textures and suspended forms in the room. Acoustic Panels were also incorporated to reinforce both the visual rhythm and acoustic comfort of the space. One panel was installed near the front of the restaurant in the location originally intended for a suspended chandelier, creating a softer and more welcoming focal point. Additional panels were placed along the back wall above dining tables, adding a layered backdrop while enhancing the warmth and intimacy of the seating areas.



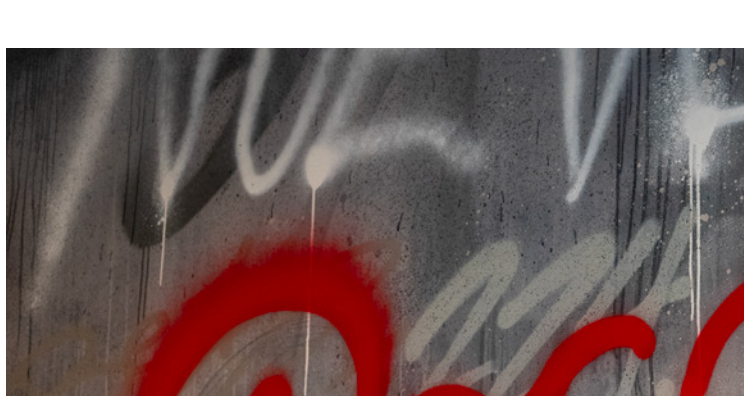
On the walls, Lisa integrated the Ramen Wall Sconce — chosen for its ease of installation and its paintable white cover. This became essential to the design: several sconces were intentionally painted over as part of the graffiti artwork, allowing them to blend seamlessly into the murals while still providing ambient glow near tables. Others remained unpainted, adding depth and texture without interrupting the visual language of the space. Through these choices, the Ramen fixtures became subtle, emotional touches of light woven into the restaurant's visual narrative.

Throughout the project, the collaboration flowed naturally. Mike shaped the spatial concept and handcrafted elements; Lisa shaped the lighting story with both artistic sensitivity and technical mastery; photographer Troy Pontbriand captured the final environment; and Zaya & Martin Group supported the selection process with product insight and guidance. It was a true partnership built on experience, intuition, and shared craft.



Reflecting on the project, Lisa shared:

"My experience with the latest Bocado addition of the Cochera & Bodega rooms was an amazing "experience". It is a fine dining restaurant in a thoroughly modern and urban setting. It has a great balance created by the food, staff and of course the amazing environment."



As the design world continues to seek solutions that are flexible, expressive, and technically adaptable, the lighting families featured in this project illustrate what becomes possible when creativity meets capability. Koncept's Z-Bar Pendant series stands out as one of the most customizable architectural lighting systems available today. Modular LED light bars can rotate 360°, allowing designers to direct light exactly where it's needed. The pendants can float, connect, and form countless configurations — linear, square, rectangular, radial, cascading — making them as sculptural as they are functional. Designers can choose from standard shapes or create custom formations through the Z-Bar Pendant Online Configurator, opening the door to lighting compositions that can be quietly minimal or boldly expressive.

Koncept's Acoustic Panels, compatible with many Z-Bar Pendant models, extend this design freedom even further. Available in ten finishes, panels can be mounted horizontally on the pendant or installed vertically along suspension wires to create dimensional, artistic planes that absorb sound while adding character. Their versatility allows them to blend into the architecture or stand out as color-forward design elements — a rare duality in acoustic lighting solutions.



The Ramen Wall Sconce brings its own sense of playful sophistication to the project, offering 360° diffused illumination within a clean circular form. Its magnetically attached faceplates — available in felt, metal, wood veneers, or a paint-friendly version, make customization effortless. Designers can match the wall color, integrate patterns, incorporate artwork, or change the finish seasonally, making Ramen a fixture that evolves with the space. Available in 9-inch and 12-inch diameters, it's equally at home indoors or outdoors, wherever soft ambient light and creative expression are desired.

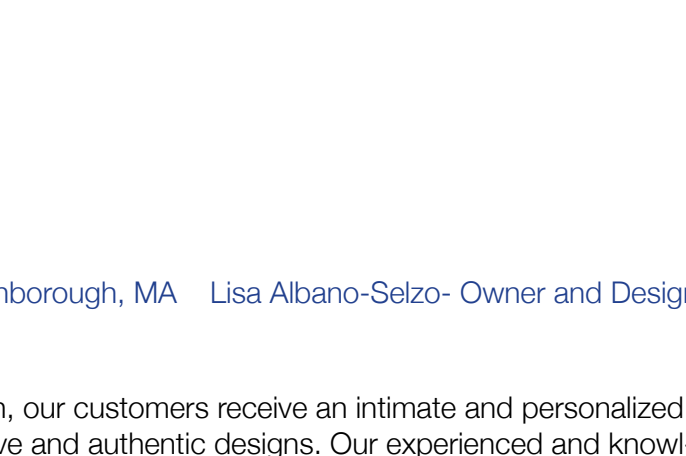
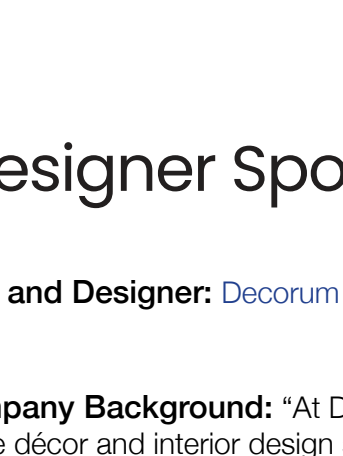


Together, these products are not just lighting solutions, they are tools for storytelling. They allow designers to shape atmosphere, movement, texture, and emotion with precision and imagination.

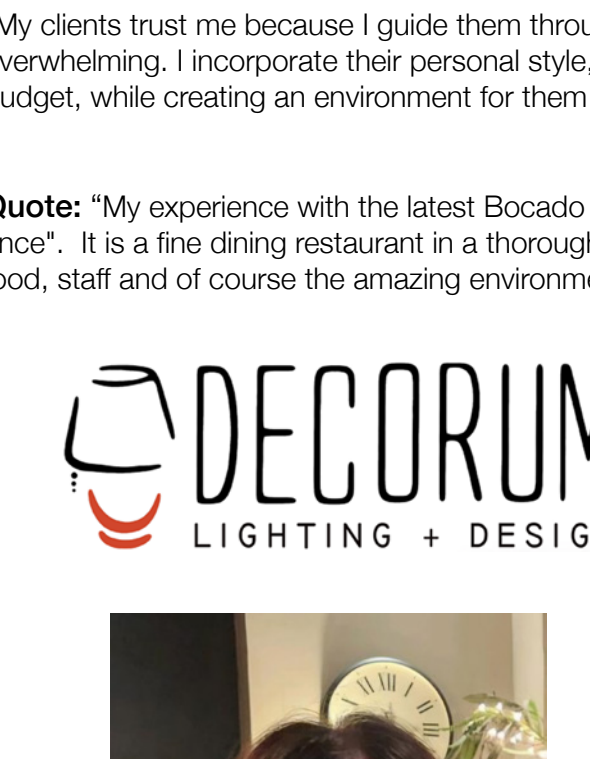
For industry professionals, this project highlights what becomes possible when lighting is integrated into highly customized environments with flexibility, precision, and artistic understanding. Designers can explore their own Z-Bar Pendant layouts using the Koncept Z-Bar Configurator, available at <https://koncept.com/SpecOnline>.

To access project tools, exclusive resources, and professional design support, industry professionals are invited to join the Koncept Designer Portal — a space to elevate projects through advanced lighting capabilities and collaborative design resources.

Z-Bar Pendant Rectangle and Square Dimensions
*Light bar size vary in length



Acoustic Panels



Ramen Wall Sconce Dimensions



Designer Spotlight

Firm and Designer: [Decorum Lighting and Design in Northborough, MA](#) | [Lisa Albano-Selzo- Owner and Designer](#)

Company Background: "At Decorum Lighting and Design, our customers receive an intimate and personalized home décor and interior design service that allows for creative and authentic designs. Our experienced and knowledgeable team can translate customer styles with a fashionable and sophisticated flair. That is the core of Decorum's individualized service."

"My clients trust me because I guide them through the design process. I understand that it can be intimidating and overwhelming. I incorporate their personal style, likes and dislikes to then offer options that will satisfy their tastes and budget, while creating an environment for them that is beautiful and comfortable." - Lisa Albano-Selzo

Quote: "My experience with the latest Bocado addition of the Cochera & Bodega rooms was an amazing "experience". It is a fine dining restaurant in a thoroughly modern and urban setting. It has a great balance created by the food, staff and of course the amazing environment." - Lisa Albano-Selzo

