

Yurei table lamp

Assembly Instructions



For video instructions, or instructions in other languages, please scan the QR code, or visit www.koncept.com/Yurei-Table

1

Power Supply

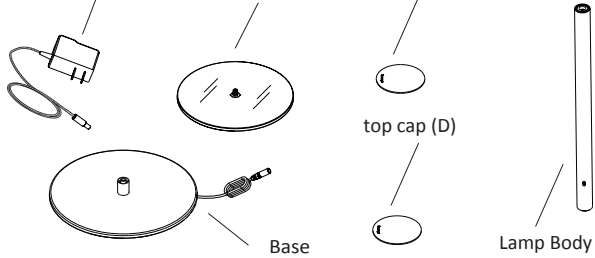
LED head

top cap (C)

top cap (D)

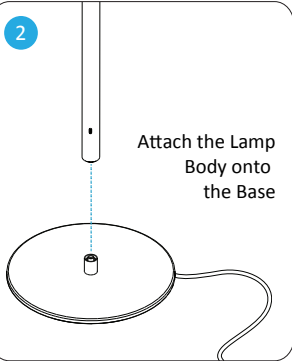
Base

Lamp Body

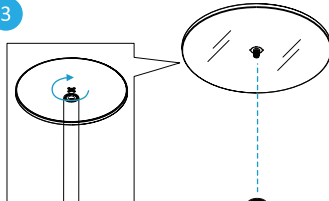


2

Attach the Lamp Body onto the Base



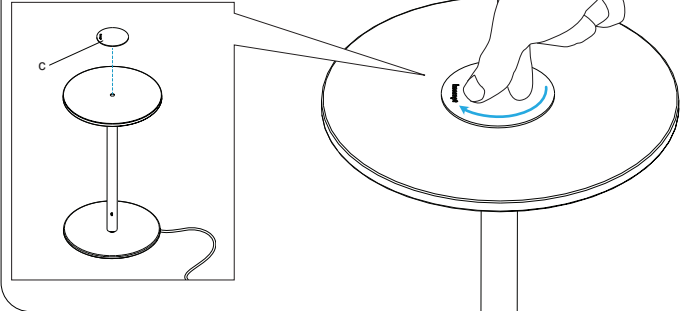
3



Screw on the LED head onto the Lamp Body. **(DO NOT OVERTIGHTEN)**

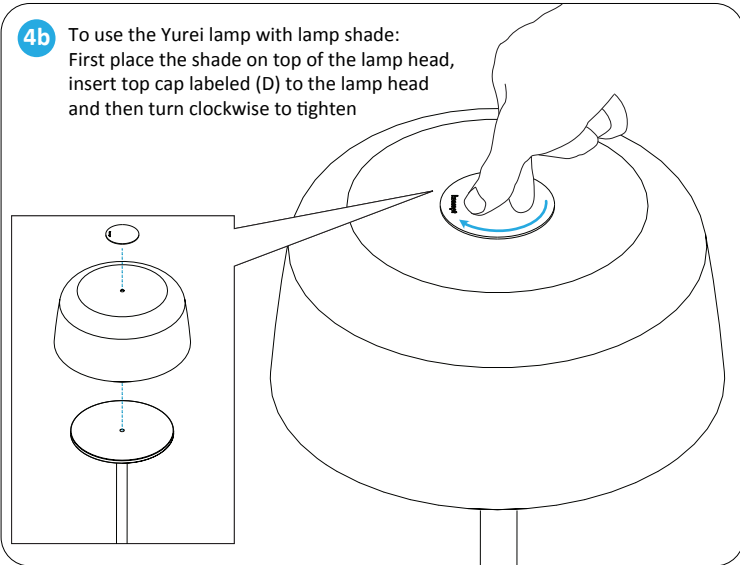
4a

To use the Yurei lamp with no lamp shade: insert top cap labeled (C) to the lamp head and then turn clockwise to tighten



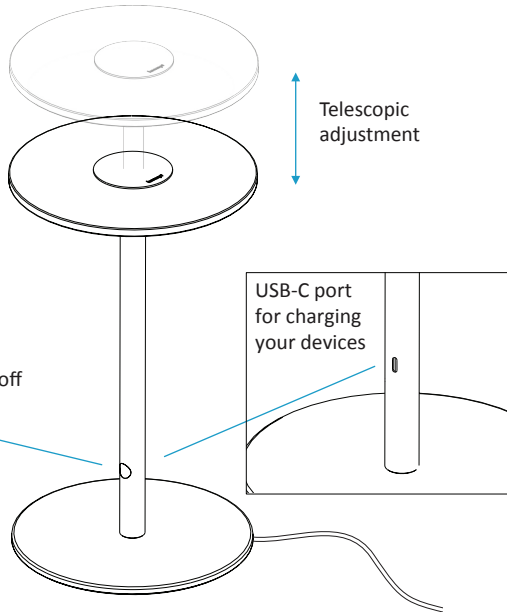
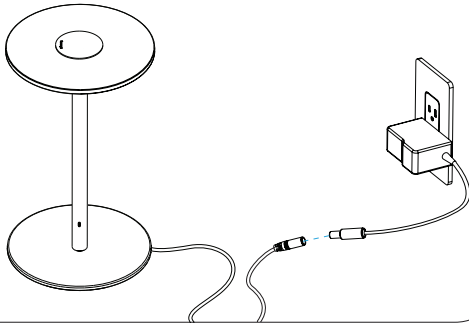

4b

To use the Yurei lamp with lamp shade: First place the shade on top of the lamp head, insert top cap labeled (D) to the lamp head and then turn clockwise to tighten



5

Plug power supply into the lamp

Telescopic
adjustmentUSB-C port
for charging
your devicesPress once to turn on/off
Press and hold to dimWarnings 

- EN** Do not use an external dimmer. Doing so may cause damage to the product.
Do not use outdoors.
- DE** Verwenden Sie keinen externen Dimmer. Andernfalls kann das Produkt beschädigt werden.
Nicht im Freien verwenden.
- FR** N'utilisez pas de gradateur externe. Sinon, le produit pourrait être endommagé.
Ne pas utiliser à l'extérieur.
- ES** No utilice un atenuador externo. De lo contrario, el producto podría dañarse.
No lo use al aire libre.
- IT** Non utilizzare un dimmer esterno. In caso contrario, il prodotto potrebbe essere danneggiato.
Non usarlo all'aperto.
- DK** Brug ikke en ekstern lysdæmper. Ellers kan produktet blive beskadiget.
Brug den ikke udendørs.

Specifications

Yurei table lamp

| | |
|-------|------------|
| Model | YUT-SW-??? |
|-------|------------|

Yurei table lamp with lamp shade

| | |
|-------|----------------|
| Model | YUT-SW-??#+??? |
|-------|----------------|

Koncept Inc.
429 E. Huntington Drive
Monrovia, CA 91016, USA
Phone: 323-261-8999
Fax: 323-261-8998

Customer Support:
support@koncept.com

Web Address:
www.koncept.com

